



## Series 2807

1-Piece  
Stainless Steel  
Spring Check Valve  
BSP Threaded

### FEATURES

MANUFACTURED IN TAIWAN (R.O.C.)

STAINLESS STEEL 316

MACHINED FROM BAR

HIGH PRESSURE

METAL TO METAL SEAT

CAN BE INSTALLED IN HORIZONTAL OR VERTICAL POSITION

NOT WATERMARKED AND NOT SUITABLE FOR INSTALLATIONS THAT  
MUST BE AS/NZS 3500 COMPLIANT (DRINKING OR NON-DRINKING WATER)

ALL VALVES PRESSURE TESTED DURING PRODUCTION

SIZE RANGE: 6MM TO 25MM

### PRESSURE AND TEMPERATURE RATINGS

TEMPERATURE RANGE: -50°C TO 420°C

MAXIMUM OPERATING PRESSURE AT NOMINAL TEMPERATURES: 6000 PSI (41,300kPa)

CRACKING PRESSURE: 3 PSI

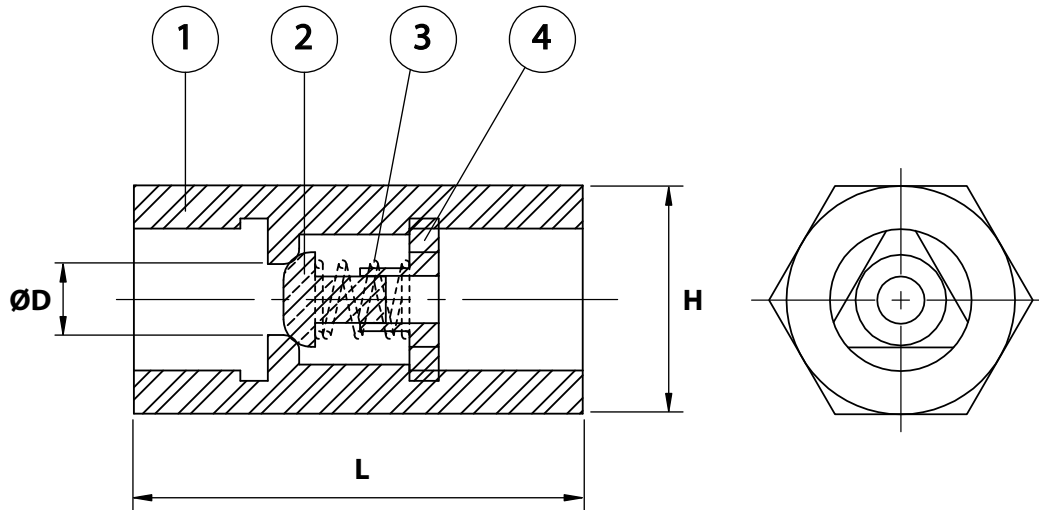
# Series 2807

1-Piece Stainless Steel

Spring Check Valve BSP Threaded



## DIMENSIONAL AND COMPONENT DIAGRAM



### MATERIALS

POS.	PART NAME	MATERIALS
1	BODY	STAINLESS STEEL 316
2	DISC	STAINLESS STEEL 316
3	SPRING	STAINLESS STEEL 316
4	SPRING HOLDER	STAINLESS STEEL 316

### DIMENSIONS - mm

Prod. Code	Size	L	H	ØD	Kv	Wgt kg
2807006	6	44	17	5	0.45	0.085
2807010	10	48	21	7	0.60	0.130
2807015	15	57	26	9	0.80	0.208
2807020	20	70	32	13	1.25	0.579
2807025	25	86	38	15	1.55	0.754

### PRESSURE/TEMPERATURE DIAGRAM

